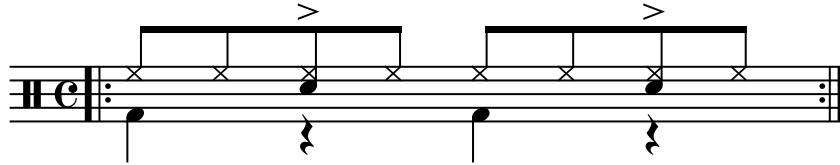


Groove clásico

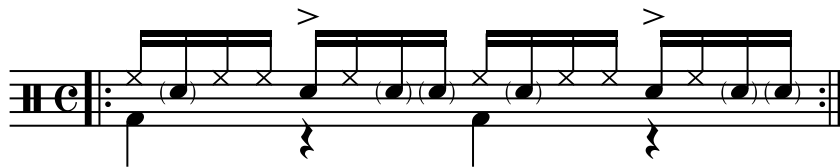
Todos los grooves tienen
1 compás de cuenta

♩ = 80 / 88 / 96



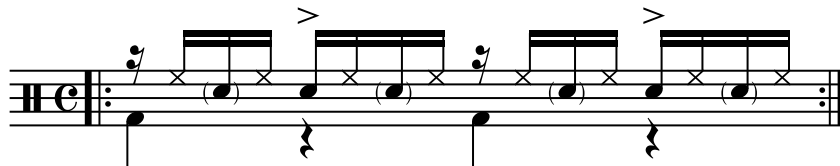
Groove paradiddle

♩ = 80 / 88 / 96



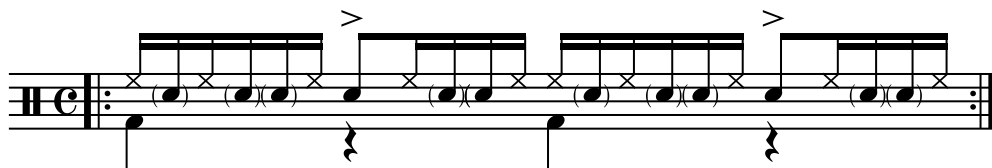
Groove lineal

♩ = 80 / 88 / 96



One hand lead

♩ = 80 / 88 / 96



**Son (2 - 3)
Rumba**

♩ = 80 / 88 / 96

Musical notation for the Rumba groove. It consists of two staves. The top staff is in treble clef with a common time signature (C). It features a series of rhythmic patterns: a quarter note followed by a quarter rest, a quarter note followed by a quarter rest, a quarter note followed by a quarter rest, a quarter note followed by a quarter rest, a quarter note followed by a quarter rest, a quarter note followed by a quarter rest, a quarter note followed by a quarter rest, and a quarter note followed by a quarter rest. The bottom staff is in bass clef and shows the corresponding bass line with quarter notes and quarter rests.

Afro Cuban

♩ = 80 / 88 / 96

Musical notation for the Afro Cuban groove. It consists of two staves. The top staff is in treble clef with a common time signature (C). It features a series of rhythmic patterns: a quarter note followed by a quarter rest, a quarter note followed by a quarter rest, a quarter note followed by a quarter rest, a quarter note followed by a quarter rest, a quarter note followed by a quarter rest, a quarter note followed by a quarter rest, a quarter note followed by a quarter rest, and a quarter note followed by a quarter rest. The bottom staff is in bass clef and shows the corresponding bass line with quarter notes and quarter rests.